



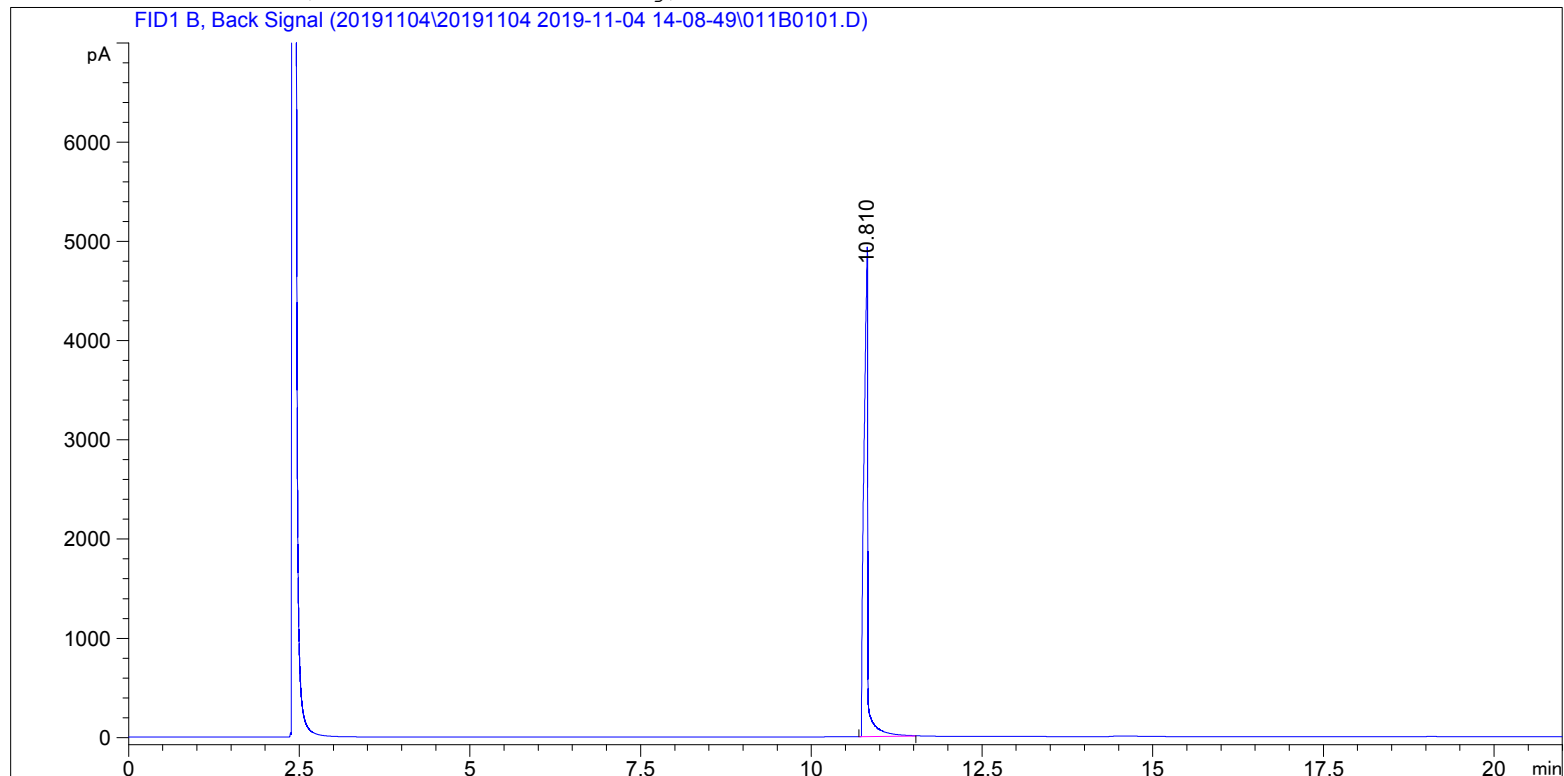
=====

Acq. Operator : admin	Seq. Line : 1
Acq. Instrument : Instrument 1	Location : Vial 11
Injection Date : 11/4/2019 2:10:16 PM	Inj : 1
	Inj Volume : 0 µl

Different Inj Volume from Sequence ! Actual Inj Volume : 1 µl

Acq. Method : C:\CHEM2015\1\DATA\20191104\20191104 2019-11-04 14-08-49\TEST-KR(HP-5)-2.M
Last changed : 11/4/2019 1:46:29 PM by admin
Analysis Method : C:\CHEM2015\1\METHODS\TEST-KR(HP-5).M
Last changed : 11/5/2019 1:23:30 PM by admin

(modified after loading)



=====
Area Percent Report
=====

Sorted By : Signal
Multiplier: : 1.0000
Dilution: : 1.0000
Use Multiplier & Dilution Factor with ISTDs

Signal 1: FID1 B, Back Signal

Peak #	RetTime [min]	Type	Width [min]	Area [pA*s]	Height [pA]	Area %
1	10.810	BB	0.0604	1.94970e4	4701.11523	1.000e2

Totals : 1.94970e4 4701.11523

=====
*** End of Report ***

ORIGINAL



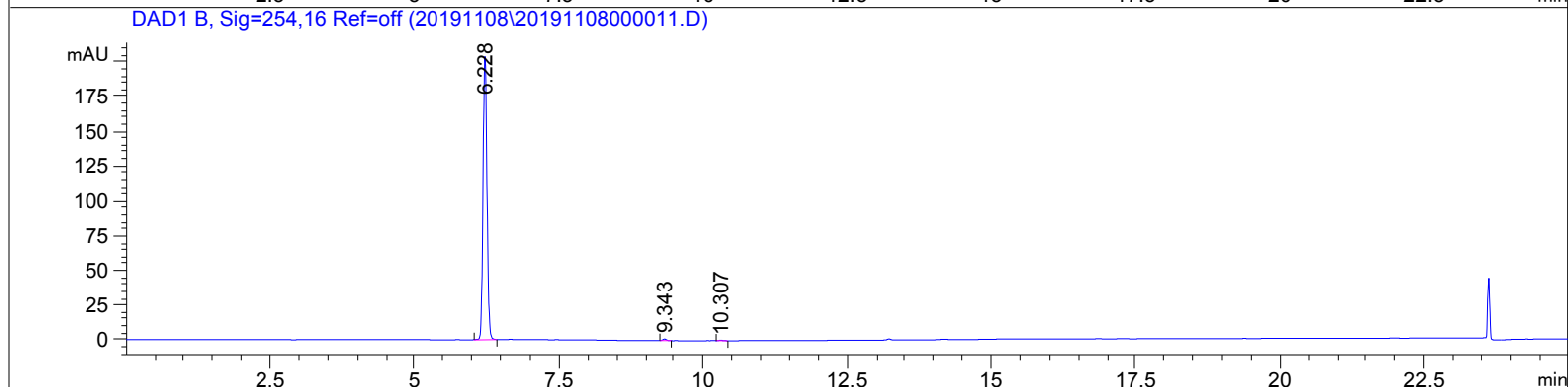
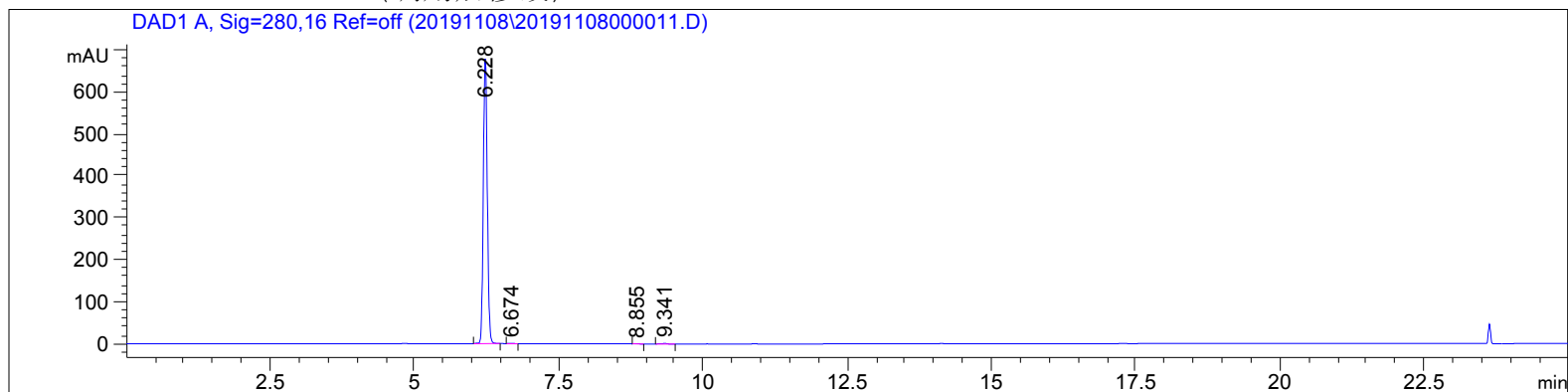
GM CHEMICAL

```

=====
操作者      : admin                      位置 : 样品瓶 87
仪器        : 仪器 1
进样日期    : 2019-11-8 15:12:14
进样量     : 2.0 µl

采集方法    : C:\CHEM32\1\METHODS\4-9.M
最后修改    : 2019-11-8 15:11:33 : admin
              (调用后修改)

分析方法    : C:\CHEM32\1\METHODS\1018.M
最后修改    : 2019-11-8 15:14:46 : admin
              (调用后修改)
    
```



面积百分比报告

```

=====
排序          :          信号
乘积因子      :          1.0000
稀释因子      :          1.0000
内标使用乘积因子和稀释因子
    
```

信号 1: DAD1 A, Sig=280,16 Ref=off

峰 #	保留时间 [min]	类型	峰宽 [min]	峰面积 [mAU*s]	峰高 [mAU]	峰面积 %
1	6.228	BB	0.0737	3244.01831	679.38776	99.6025
2	6.674	BB	0.0714	3.46486	7.57060e-1	0.1064
3	8.855	BB	0.0657	1.89725	4.64041e-1	0.0583
4	9.341	BB	0.0930	7.58563	1.14887	0.2329

总量 : 3256.96605 681.75772

ORIGINAL



信号 2: DAD1 B, Sig=254,16 Ref=off

峰 #	保留时间 [min]	类型	峰宽 [min]	峰面积 [mAU*s]	峰高 [mAU]	峰面积 %
1	6.228	BB	0.0736	974.76868	204.47708	99.3427
2	9.343	BB	0.0703	4.96397	1.10753	0.5059
3	10.307	BB	0.0703	1.48540	3.31120e-1	0.1514

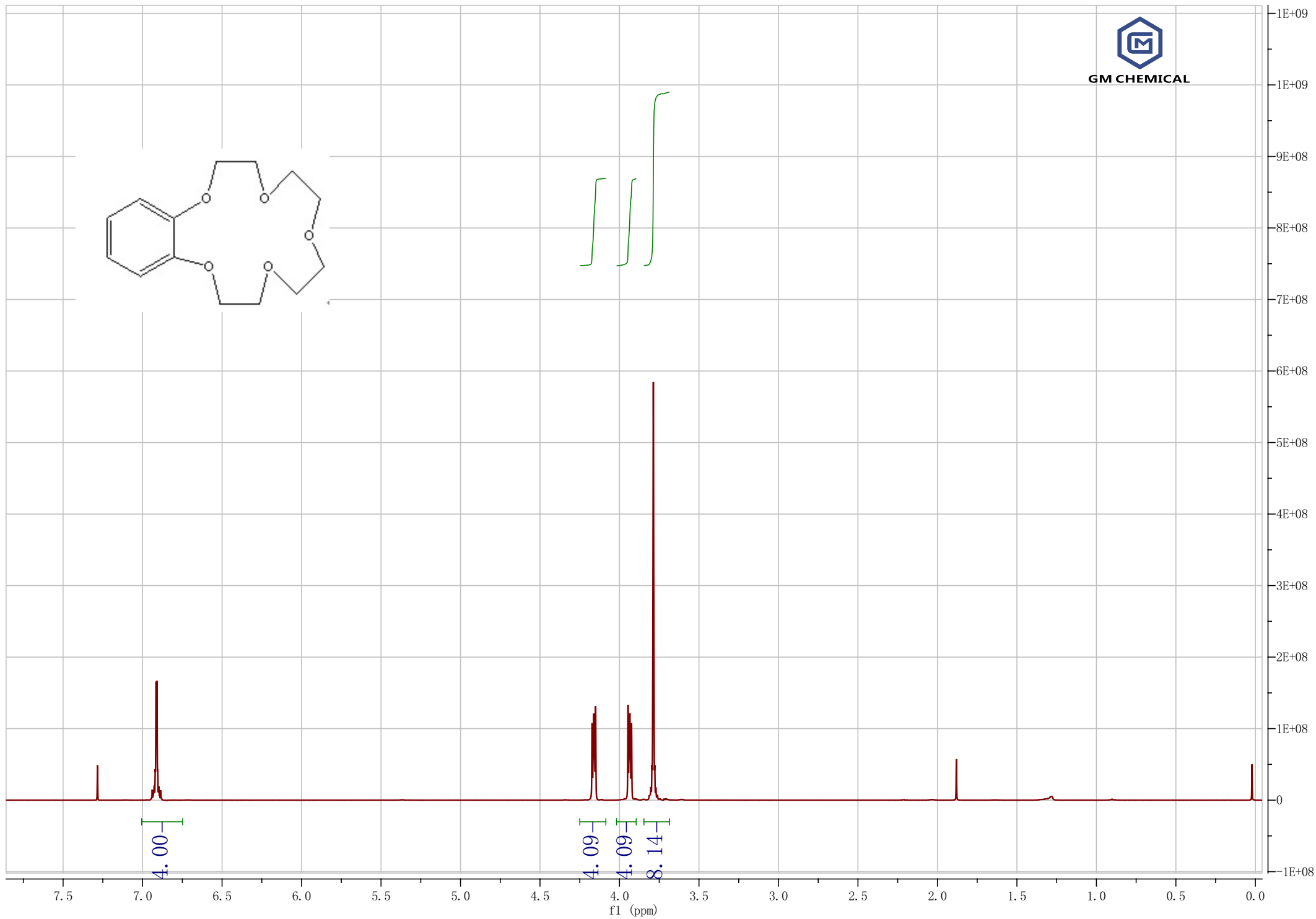
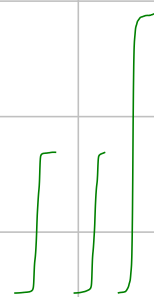
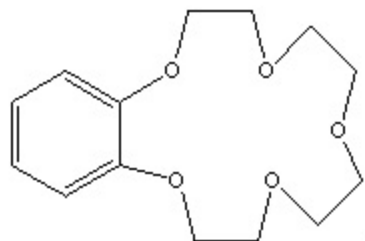
总量 : 981.21804 205.91573

=====
*** 报告结束 ***

ORIGINAL



GM CHEMICAL



ORIGINAL